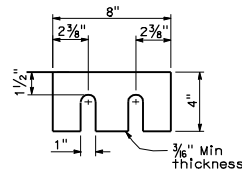
**NOTE A**

Adjust spacing to clear scupper opening by 2" if applicable.

**SHIMS REQUIRED FOR
TOP AND BOTTOM RAIL**

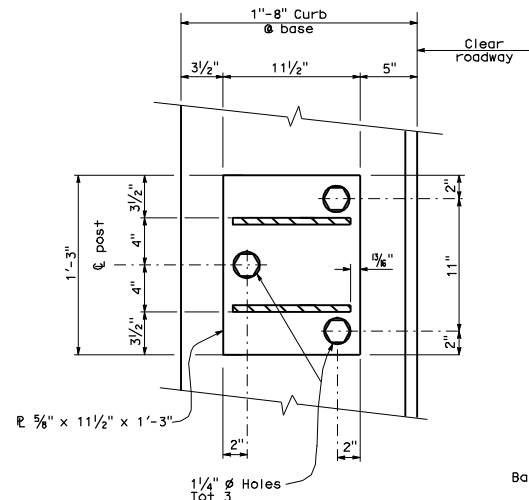


STUD BOLT DETAIL

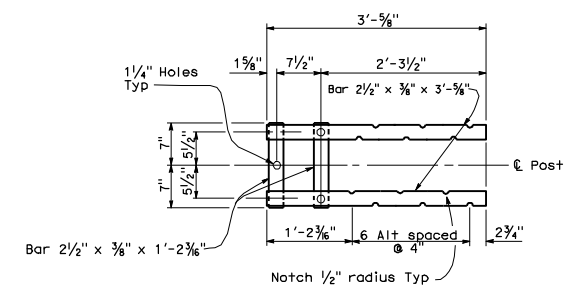
Stud attached with complete penetration butt weld
3/4" ϕ x 2 7/16" Stud bolt

TS 8 x 4 x 5/16

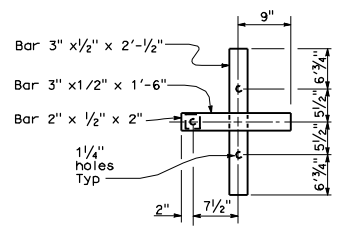
SECTION AT POST



SECTION B-B



**SECTION C-C
Top Anchorage**



**SECTION D-D
Lower Anchorage**

DIST	COUNTY	ROUTE	POST MILES TOTAL PROJECT	SHEET TOTAL NO. SHEETS

REGISTERED CIVIL ENGINEER
June 30, 2006
PLANS APPROVAL DATE
The State of California or its officers or agents shall not be responsible for the accuracy or completeness of electronic copies of this plan sheet.

To accompany plans dated _____

STATE OF CALIFORNIA
DEPARTMENT OF TRANSPORTATION
**CALIFORNIA ST-10
BRIDGE RAIL
(SHEET 1 OF 3)**

NO SCALE

RSP B11-68 DATED JUNE 30, 2006 SUPERSEDES STANDARD PLAN DATED MAY 1, 2006 -
PAGE 284 OF THE STANDARD PLANS BOOK DATED MAY 2006.

REVISED STANDARD PLAN RSP B11-68

2006 REVISED STANDARD PLAN RSP B11-68